



Feature Description Document

Configuring IXM Link for Siemens Fusion



Purpose

This document outlines the process of configuring IXM Link to sync users between Invixium's IXM WEB and Siemens Siveillance Fusion.

Applies to

TITAN	TFACE	TOUCH 2	SENSE 2	MERGE 2	MYCRO
All Devices	All Devices	All Devices	All Devices	All Devices	All Devices

Description

IXM Link is a licensed module in IXM WEB that helps to synchronize the user database between IXM WEB (from where biometric enrollment for users is performed) and leading Access Control Panel Software (from where access rules for the users and the organization are managed).

This FDD will describe how to set up and configure IXM Link if you are using Siemens Siveillance Fusion to keep IXM WEB users in sync with Siemens Fusion by using its APIs to import and export users and their cards.



Fusion Module Activation

The option to activate Siemens (Fusion) License is available under the **License** tab.

STEP 1

Select **Settings** icon on top right of the page >> Click on **About IXM WEB** >> Click on **copy to clipboard** button next to **MACHINE KEY**.

Request a **License** by sending email to support@invixium.com. Paste the copied machine key in the email.


About IXM WEB ✕

VERSION 3.0.20.0
IXM WEB Copyright © 2024 Invixium.
All rights reserved.
Invixium [Terms of Service](#).

THIRD PARTY COMPONENTS
IXM WEB includes elements and components from Telerik's Kendo UI Web. Copyright © 2024,
All rights reserved.

ANNUAL SUPPORT CONTRACT INFORMATION

Status	Expire On
Active	07/31/2025

MACHINE KEY 

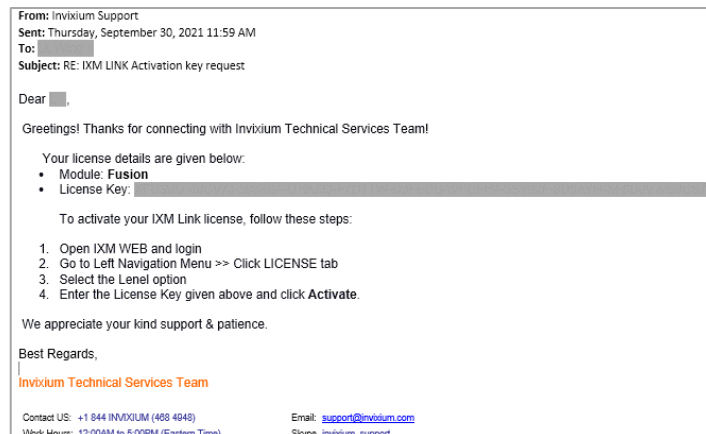
B5k6X0y8NFfzQkuxy/kUBNHTNHVpc6yLgBoCitYxHdT25EuuoX4VHLR2Fps12MjHSj5VUgDHmY
kLAwjAkxvag9EZ/0dujHSU4NfCykXOGbg=

[IXM WEB Activation](#) [What's New](#)



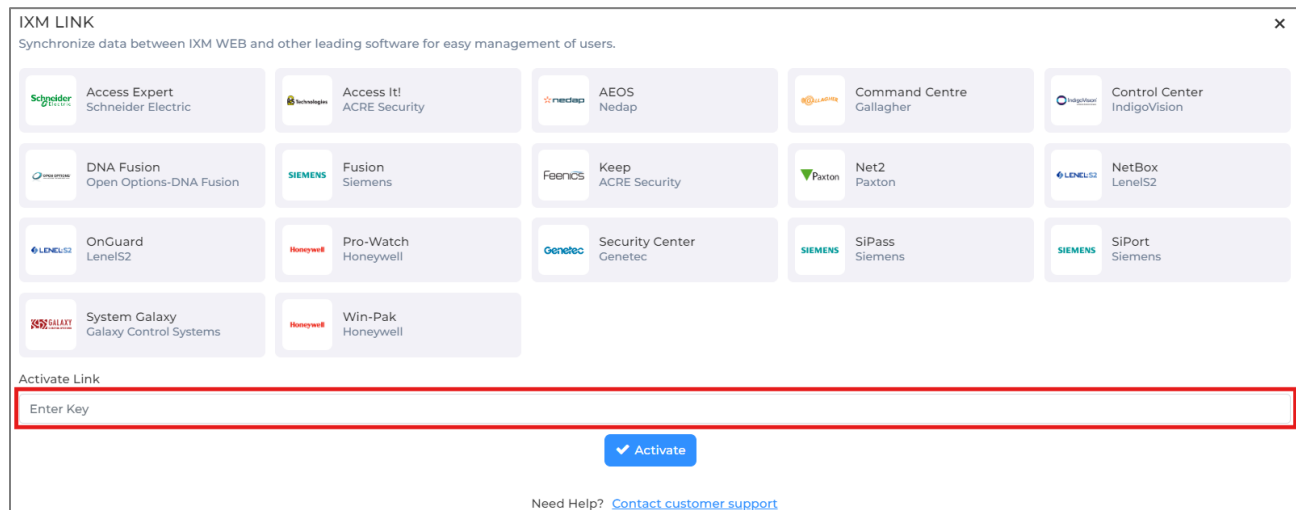
STEP 2

You will receive an email from Invixium Support containing a license key for the Siemens (Fusion) Activation.



STEP 3

Navigate to **License** → Click on **IXM LINK** → **Copy** and **paste** the License Key in the box provided, and then select **Activate**.



IXM WEB is now licensed for use with Fusion and configuration can begin.



Configuring Wiegand to Output Fusion

1. Register all IXM devices.
2. From **Devices** tab, select any device.
3. Navigate to the **Access Control** tab.
4. Scroll down and click on **Wiegand Output**.

EVENTS	Configuration
Wiegand	ID Type: Employee ID; Duress: None
Identification	Success: Standard 26 bit; Fail: None
Verification	Success: Standard 26 bit; Fail: None
Anti-Shock	Format: IXM 82 bit Device S/N; ID Value: Device Serial Number
Heart Beat	Format: None; ID Value: Device ID; Interval (sec): 60
Employee not found	Format: None
Thermal Authentication	Format: Standard 26 bit
Mask Not Detected	Format: None
Invalid Attestation Questions	Format: None
PULSE (MSEC)	Width: 40; Interval: 2000

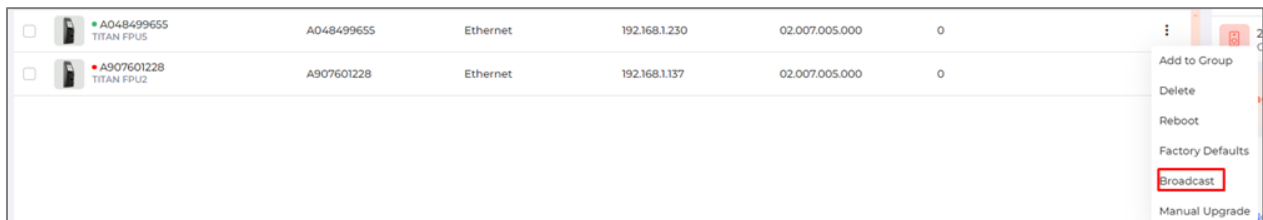
APPLY **RESET**



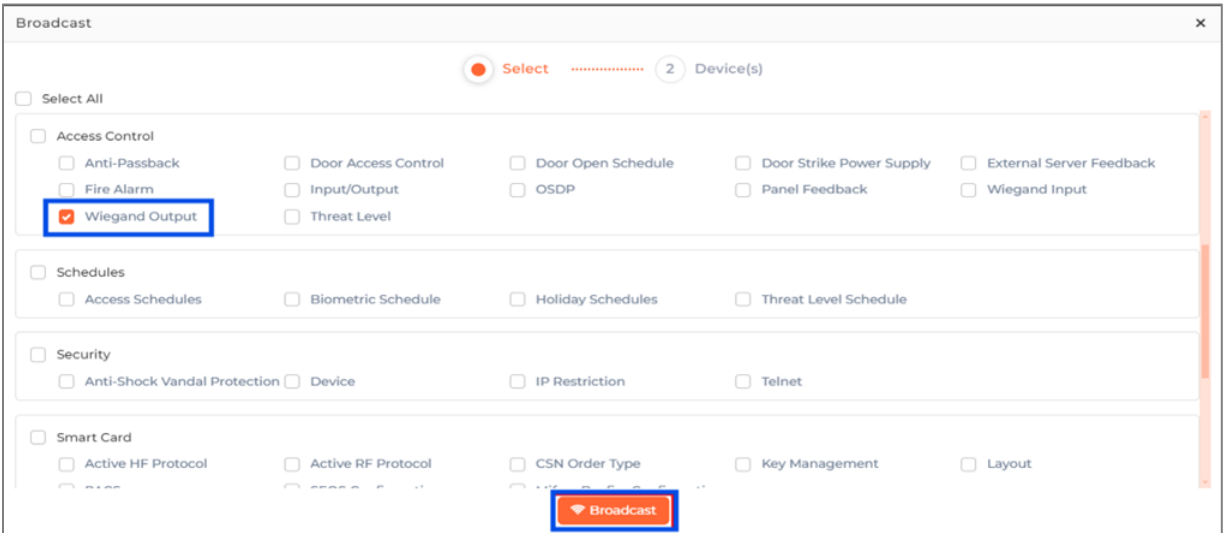
5. Toggle the switch on the top right-hand side to enable Wiegand Output for the device.
6. Set ID Type of output Wiegand to Employee ID/Default/Actual Card. By default, Employee ID is selected in Wiegand Event.

Note: For fingerprint and face access, default card Wiegand output data will be generated

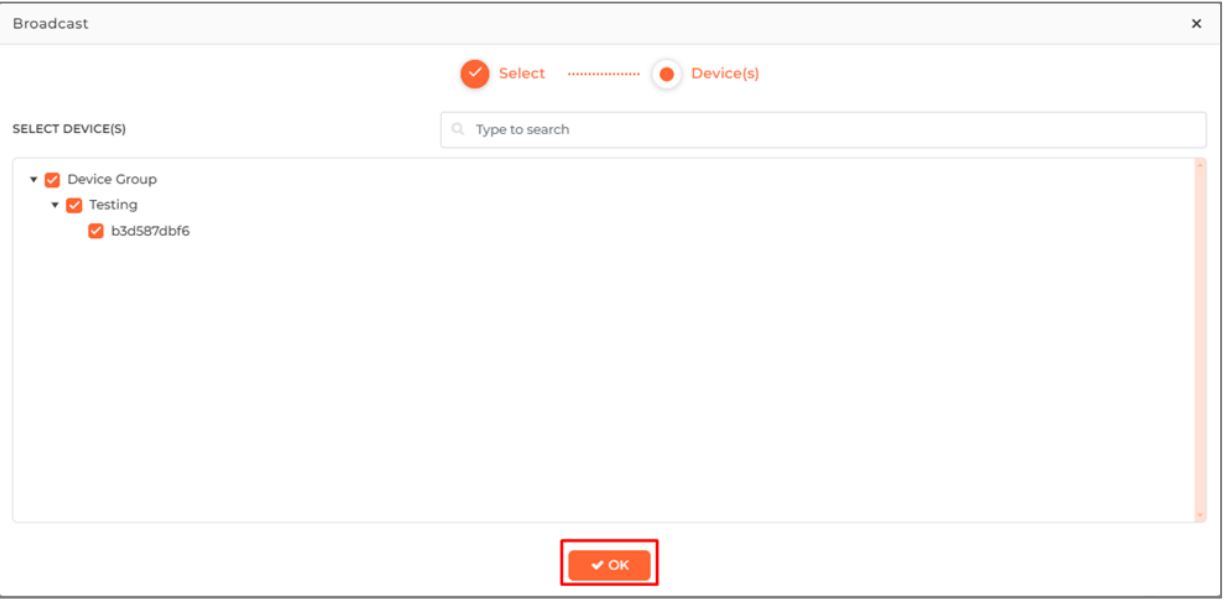
7. Select desired format for Identification, Verification, Employees not found, Thermal Authentication and Mask not Detected for the selected Card.
8. Click **Apply**.
9. This will update the Wiegand Output settings of the selected device.
10. If you have more devices, then follow the next steps to copy all Wiegand settings to all devices simultaneously. *Note: This copies all Wiegand output settings.*
11. To push these configurations to other Invixium readers, while the configured Invixium device is selected, click the **Broadcast** option from vertical ellipses button



12. Scroll down to the **Access Control** section → check **Wiegand Output** option → Click on **Broadcast**.



13. Select the rest of the devices in the popup. Click **OK** to copy all Wiegand output settings of the source device to all destination devices.





Field Mappings

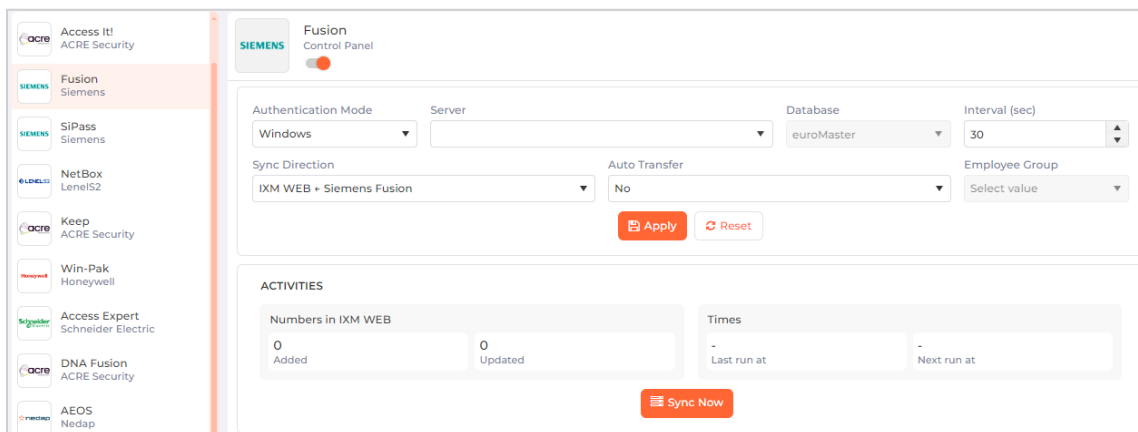
Below are the Siemens Fusion fields mapped with IXM WEB.

Siemens Fusion Field	IXM Field	Notes
First name	First Name	
Last Name	Last Name	
Employee Number	User ID	
Date of Birth	Birth Date	
Gender	Gender	
Address 1	Address - 1	
Address 2	Address - 2	
City	City	
State	State	
Country	Country	
Phone / Mobile	Mobile	
E-mail	Email	
Phone / Mobile (Emergency)	Home Phone	
Credential Number	Prox ID	
PIN	PIN	
Issue Level	Issue Level	
Site Code	Facility Code	
Delete (Button)	Suspend User	Delete button doesn't actually remove the record from the database in Siemens Fusion. For deleted users, IXM WEB will mark the Suspended user as Active.



Configuring LINK for Siemens Fusion

1. Navigate to **Link** → click the **Siemens (Fusion)** icon.



2. Enable editing configuration by toggling the switch next to the logo to **ON**. Data is not synced when the configuration is applied with this switch in the OFF position.
3. Provide values for the Web Service URL, Instance Name, User, Password, interval, Sync Direction, Auto Transfer option, and Sync Card Number fields. Each configuration setting is explained below:

Authentication Mode: Windows or SQL Server as authentication mode for login type.

Server: Name or IP of SQL Server Instance where Siemens Fusion database is installed.

User: Username to log in to SQL Server to access database.

Password: Password to log in to SQL Server to access database.

Database: Select the database which contains Siemens Fusion users.

Interval: Latency acceptable between data transfers.



Sync Direction: Sync data from Siemens Fusion to IXM WEB.

Auto Transfer:

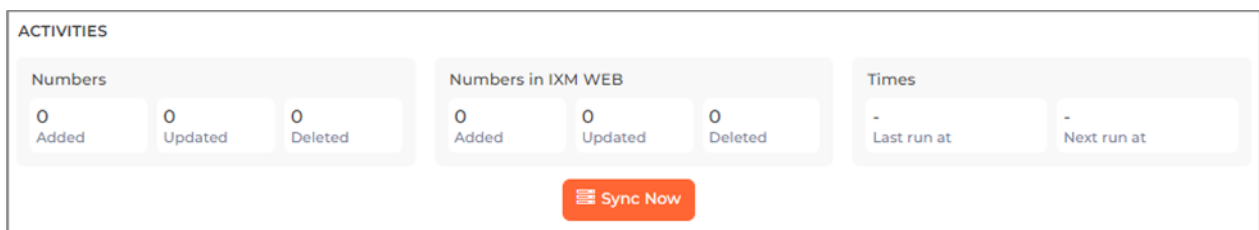
- No: Employees synchronized from Keep will not be automatically added to any of the employee groups present in IXM WEB.
- Yes: On selecting 'Yes' for Auto Transfer, the employee group selection dropdown enables which, displays all the employee groups present in IXM WEB. All the employees synchronized from Keep will be automatically added to the employee group selected on Link Configuration Page.

Employee Group: Selection of employee group needs to be done to use the Auto transfer functionality.

Note: If you've created any Employee Group on any device then turn Auto Transfer off by setting it to None of the Employees to Any Device. Employee Group and Device Group are alternative mechanisms provided to distribute employees to devices and they don't mix well. You should turn this off and use the Employee Group/Device Group feature also when the number of employees imported from Siemens Fusion exceeds the number of employees allowed on IXM device(s).



4. Click **Apply** to save the settings.
5. When synchronization happens at the specified intervals and the users are added or updated, the numbers will change accordingly.
6. For immediate syncing instead of at the specified automatic intervals click the “Sync Now” button which runs an immediate sync.



7. Here you can see data pertaining to license usage with last and next run times.
8. Clicking **Sync Now** immediately syncs pending data. This is useful when you don't want to wait until the next scheduled run which is shown in Next Run At.
9. When data is syncing at the given interval, the numbers in the Activity log will change accordingly.



Multiple Cards

Siemens Fusion can have multiple cards per user but IXM WEB supports only one Prox card. Link selects the first available valid card.



Support

For more information relating to this Feature Description document, please contact us at support@invixium.com

Disclaimers and Restrictions

This document and the information described throughout are provided in their present condition and are delivered without written, expressed, or implied commitments by Invixium Inc. and are subject to change without notice. The information and technical data herein are strictly prohibited for the intention of reverse engineering and shall not be disclosed to parties for procurement or manufacturing.

This document may contain unintentional typos or inaccuracies.

TRADEMARKS

The trademarks specified throughout the document are registered trademarks of Invixium Access Inc. All third-party trademarks referenced herein are recognized to be trademarks of their respective holders or manufacturers.

Copyright © 2024, INVIXIUM. All rights reserved.